

Deployment of Keepit for Windows

Keepit A/S

October 13, 2010

1 Introduction

When deploying Keepit in larger setups with many desktops and servers, installing Keepit individually on each computer is cumbersome and time consuming. In order to accommodate this MSI packages can be deployed from a central Windows domain controller to multiple clients when they log on to the domain.

Since Keepit requires account information to be entered upon initial installation, simply deploying the MSI package is not enough. Keepit supports adding extra parameters to the installation package so an account will be registered automatically at the end of installation.

This document describes how to add these parameters and a way to deploy the Keepit MSI package.

2 Modifying the MSI package to automatically create an account

The MSI package needs to be modified to include account information for automatic account creation to work. In order to do this, a tool called “Orca editor” needs to be downloaded and installed. This tool is part of the Windows Installer SDK which can be download from Microsofts website¹.

After having installed the Windows Installer SDK, locate the Orca.msi file in the “tools” directory of the installation and install the Orca tool normally.

¹Currently available at <http://www.microsoft.com/downloads/en/details.aspx?FamilyID=e96f8abc-62c3-4cc3-93ad-bfc98e3ae4a3>

When the Orca tool has been installed, a new menu option will be available for .msi files. Download the Keepit MSI package as usual but instead of installing it, right click on the file and select “Edit with Orca”. Once the Keepit MSI package has been opened with the Orca tool, it needs to have four fields added to its “Property” table. The required fields are:

- **ACTIVATIONKEY**
The activation key provided by Keepit.
- **USERNAME**
The desired username for all the machines that Keepit will be installed on.
- **PASSWORD**
The desired password that should be created for this username.
- **PRODUCTTYPE**
The kind of product to be created for installation, e.g. “Desktop”.

When opening the MSI package in the Orca tool, locate the “Property” table in the left column in the view. After having selected that table, double-click in the right column once for each of the four required values and write e.g. **ACTIVATIONKEY** as the property and the value of the activation key in the value field. Note that the properties must all be entered in uppercase, though the value of each property is case insensitive. When all four properties have been added, the Keepit MSI package is ready for deployment. Close the Orca tool and select “Yes” when asked whether to save the changes.

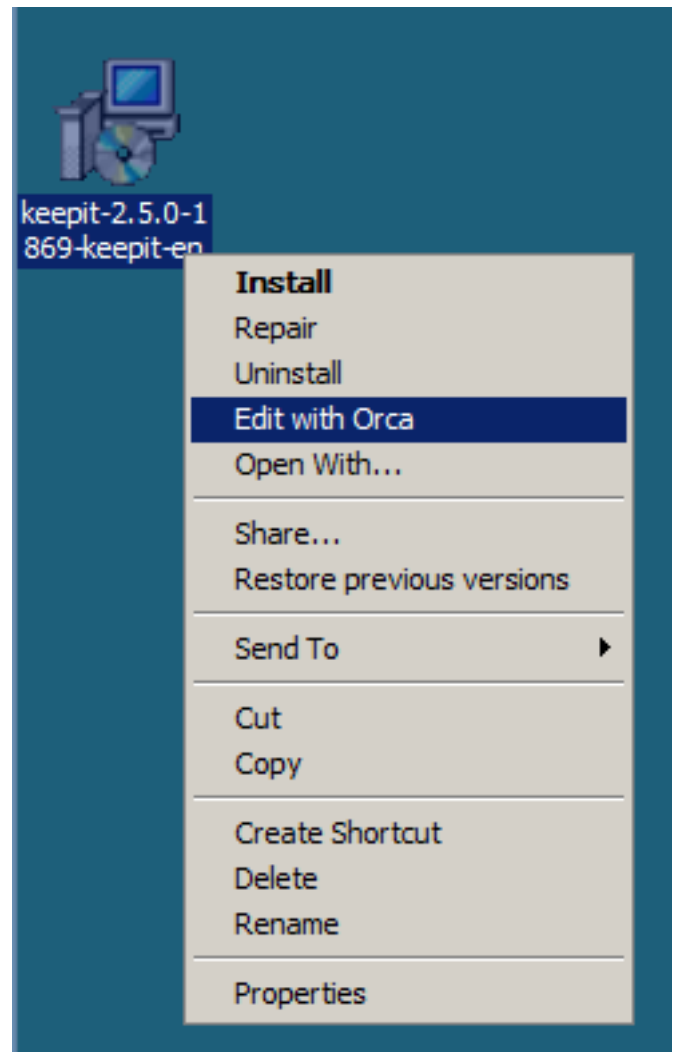


Figure 1: Selecting an MSI package for editing with Orca

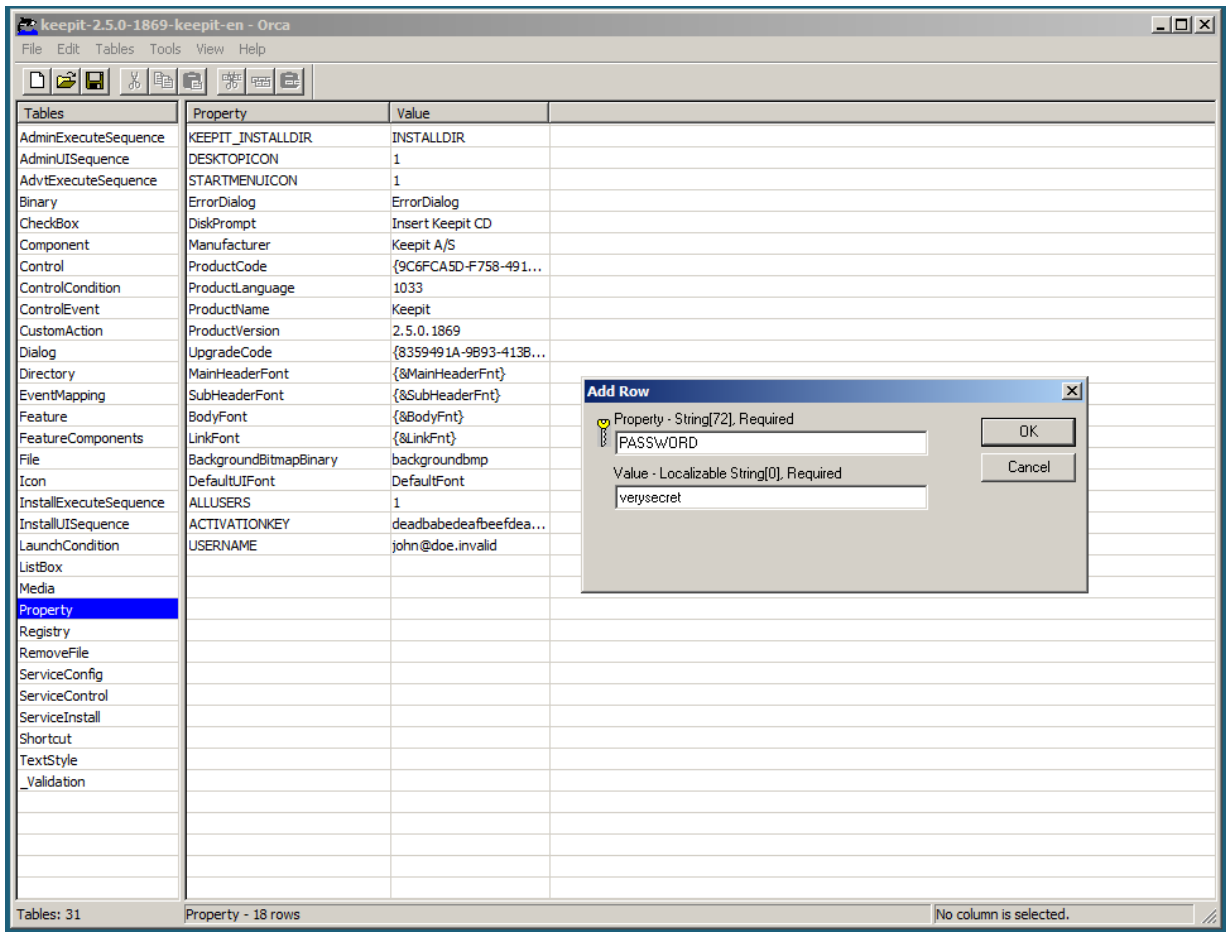


Figure 2: Adding the required properties to the MSI package

3 Adding the MSI package for deployment in a Windows domain

There are several ways to deploy MSI packages in a Windows domain including using System Management Server (SMS)² and Software Update Services (SUS)³. This document describes how to deploy the MSI package will using a standard group policy⁴ on a Windows 2008 domain controller without the use of additional software.

3.1 Create a distribution point

In order to deploy the Keepit MSI package, the first thing to do is to create a “distribution point”. Start out by creating a shared folder by following these steps:

1. Log on to the server with an administrator account.
2. Create a shared folder and make sure that the accounts on the machines that should have Keepit installed has at least read access to the folder. In this simple example, we simply give everyone read access. Right click on the folder to share, select “Share...” and add “Everyone” to the list of people who should have access to the folder.

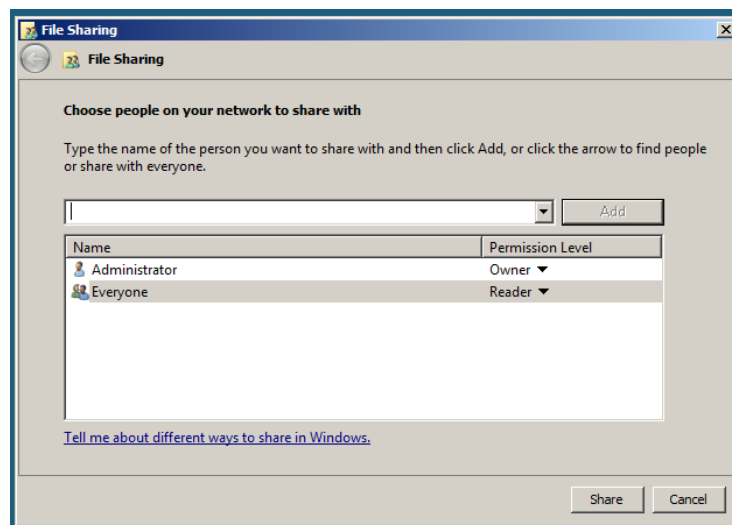


Figure 3: Setting permissions on the deployment folder

3. Finally, copy or move the modified Keepit MSI package to the newly created shared folder.

²<http://www.microsoft.com/systemcenter/configurationmanager/en/us/sms.aspx>

³<http://technet.microsoft.com/en-us/wsus/default.aspx>

⁴<http://technet.microsoft.com/en-us/windowsserver/grouppolicy/default.aspx>

3.2 Create a GPO for deployment

You can create a GPO (Group Policy Object) and link the GPO to any Active Directory container that contains the target computers to which you want to deploy the Keepit MSI package.

In this simple example we link the GPO for deploying Keepit to the default domain which will deploy Keepit to all workstations connecting to this domain controller.

In order to do this, follow these steps:

1. From the “Administrative tools” menu select the “Group Policy Management” tool.
2. Locate the domain where Keepit should be deployed, right click and select “Create a GPO in this domain, and link it here...”.

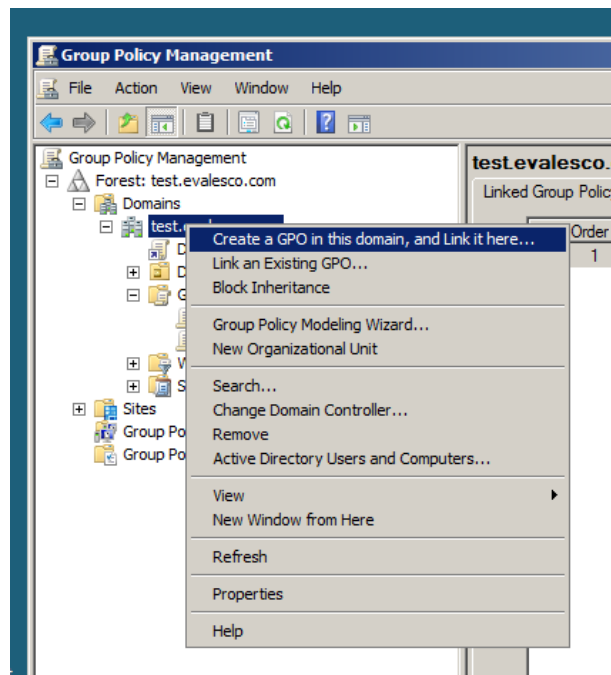


Figure 4: Creating a new GPO

3. Name the GPO e.g. “Keepit Deployment”.
4. Right click on the newly created GPO and select “Edit..”.
5. In the “Group Policy Management Editor” expand “Computer Configuration” select “Policies” then “Software Settings” and finally “Software installation”.
6. In the column on the right, right click and select “New package...”.
7. Locate the network path to the shared folder created earlier and select the Keepit MSI package, e.g. `\\win2008srv\shared\keepit.msi`.

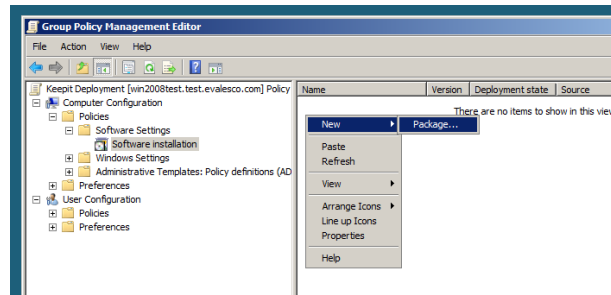


Figure 5: Adding a software package to the GPO

8. When asked how to deploy the package select “Assigned”.

3.3 Deploy Keepit on first login (optional)

Windows XP and newer Windows versions has a feature where the software does not get deployed upon first login in order to speed up the login process. If Keepit should be deployed the first time a user logs in, that default behavior needs to be explicitly changed.

1. In the “Group Policy Management Editor” for the GPO created earlier, expand the “Administrative Templates and from there expand the “System” item.
2. Locate and click on the “Logon” item.
3. In the right column double click the setting named “Always wait for the network at computer startup and logon”.
4. Select “Enabled” and click “OK”.

Keepit will now be deployed automatically to the workstations that are members of the domain where the GPO was assigned and will automatically register an account with the information entered in the MSI next time they log on to the domain.